



APPLICATION GUIDE



SHAC[®] Shactivate SEWAGE DIGESTER

Reduces odors and solids in sewage systems.

SHAC *Shactivate Sewage Digester* stimulates and balances the various microbial families already located in sewage systems and helps to provide them with a complete diet of nutrients and minerals, a more favorable pH, and reduces contaminate interference. This treatment allows microbes to biodigest sewage at an optimum rate.



SHAC *Shactivate*:

- **Reduces odors and harmful gases** providing a safer and more pleasant environment in communities, households, collection and storage facilities.
- **Reduces organic sludge**, saving time and money on pumping and dredging; increases volume retention and storage capabilities.
- **Stabilizes contaminants and nutrients** resulting in a healthier environment for microbes to function and aids in meeting effluent release requirements for treatment facilities.

Please note the following when using *Shactivate*:

- *Shactivate* is only effective at aiding in the decomposition of **organic material**. It cannot breakdown inorganic material such as sand, plastics, or clay.
- **Excessive chemical use (bleach, chlorine, strong cleaners, etc.) and high salt content** all slow down the microbes in the system and reduce the effectiveness of *Shactivate*. Results under these conditions may be slow and/or require additional product and management strategies.
- **Temperature will affect microbial action**: cold conditions (late fall, winter, and early spring) can reduce microbial activity - do not expect rapid results under these conditions.
- *Shactivate* is recommended for both black and gray water holding tanks - in units with both types, both will respond to treatment.
- Applying *Shactivate* through drains will keep lines free of organic deposits.

RATES: Use the following chart to determine your *Shactivate* rate

Application	Rate
Home Septic Systems	1 litre (1 US qt) <i>Shactivate</i> per person per year. Flush down toilets or drains, applying 1/2 in spring and 1/2 in fall.
Recreational Vehicles	After emptying the wastewater holding tank, pour 250 ml (1 cup) of <i>Shactivate</i> down the toilet or drain and flush with enough water to carry all the <i>Shactivate</i> into the tank. Repeat each time tank is emptied. For a small tank, use 125 ml (4 US oz) <i>Shactivate</i> per treatment.
Outdoor Toilet	Use 1 L (1 US qt) of <i>Shactivate</i> for holding tanks up to 5000 litres (1320 US gal) after each cleaning. For heavy use, apply an additional 250ml (1 cup) <i>Shactivate</i> every 1-2 weeks.

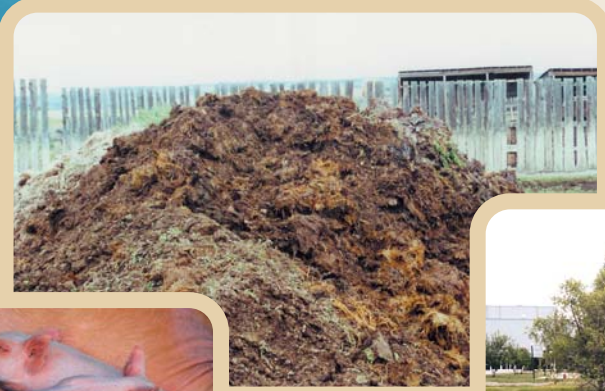
Application	Rate
	NOTE: For larger holding tanks, add an additional 1 L (1 US qt) <i>Shactivate</i> for each additional 5000 litres (1320 US gal) of capacity.
Toilets with dug earthen pits	Mix 250 ml (1 cup) of <i>Shactivate</i> into 20 L (5 US gal) of water and splash down the hole attempting to moisten the entire pit surface. Repeat every two weeks or when odors reappear.
Commercial Portable Toilets	After cleaning, add 250 ml (1 cup) of <i>Shactivate</i> to 40 L (10 US gal) of water before using. For small tanks (12-15 US gal), apply 125 ml (4 US oz) <i>Shactivate</i> to 20 litres (5 US gal) of water.
Grease Traps - Restaurants & Processing Plants	Because of wide variations in design and flow rates, applications vary. Call SHAC Head Office at 1-888-533-4446 for specific rates.
Industrial / Municipal Sewage Lagoons / Systems	Contact SHAC Head Office or Local Distributor for complete assessment of your lagoon(s) / system.

Troubleshooting & Helpful Hints when using *Shactivate*:

Condition or Situation	Possible Cause	Treatment
Odors & gases	In severe cases, the septic tank may be full of solids or have a heavy crust that causes sewage to back up into the home.	<ul style="list-style-type: none"> Pump out the tank and apply double the recommended application rate of <i>Shactivate</i>.
Saturated or slow-draining field systems	Possible accumulation of organic matter.	<ul style="list-style-type: none"> Pour 10 L of <i>Shactivate</i> into the final compartment of the septic tank for initial treatment. Continue using normal rates for home septic systems. Structurally damaged fields will affect treatment results.
Using outdoor toilets / outhouses for an event or infrequently	Conditions may be dry.	<ul style="list-style-type: none"> If conditions are dry, it may be necessary to add water down the hole to moisten the residue. Treat toilets 3-4 days prior to the start of the event, especially after long periods of inactivity.



SHAC



SHAC
Feed
Additive

SHAC
Manure
Digester

SHAC
Ponder

SHAC
Shactivate
SEWAGE DIGESTER

SHAC
Homestead
ORGANICS COMPOSTER

FOR MORE INFORMATION CONTACT:

SHAC[®]

environmental products inc.

PHONE TOLL FREE: 1-888-533-4446

PHONE: (403) 528-4446

FAX: (403) 529-9334

E-MAIL: office@shac.ca

WEBSITE: www.shac.ca

P.O. Box 73

Medicine Hat, Alberta

Canada T1A 7E5